

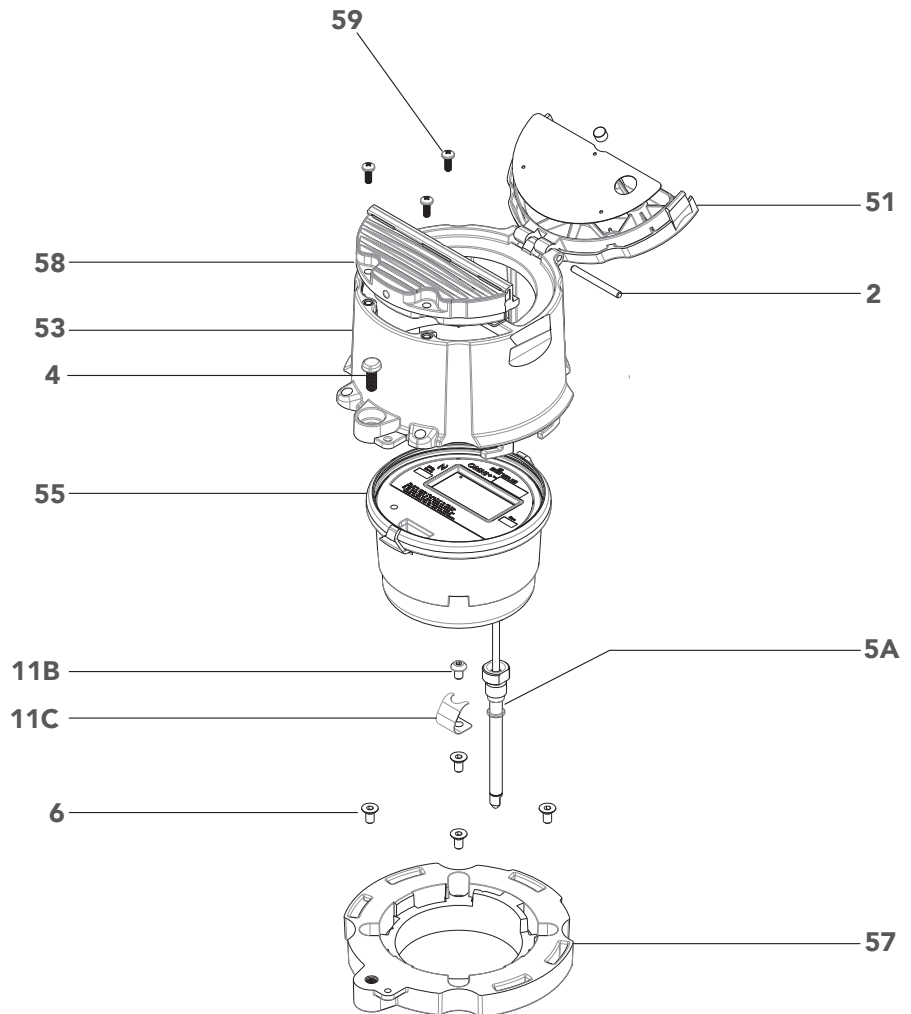
OMNI™ F2: 4", 6", 8" and 10"

Parts List



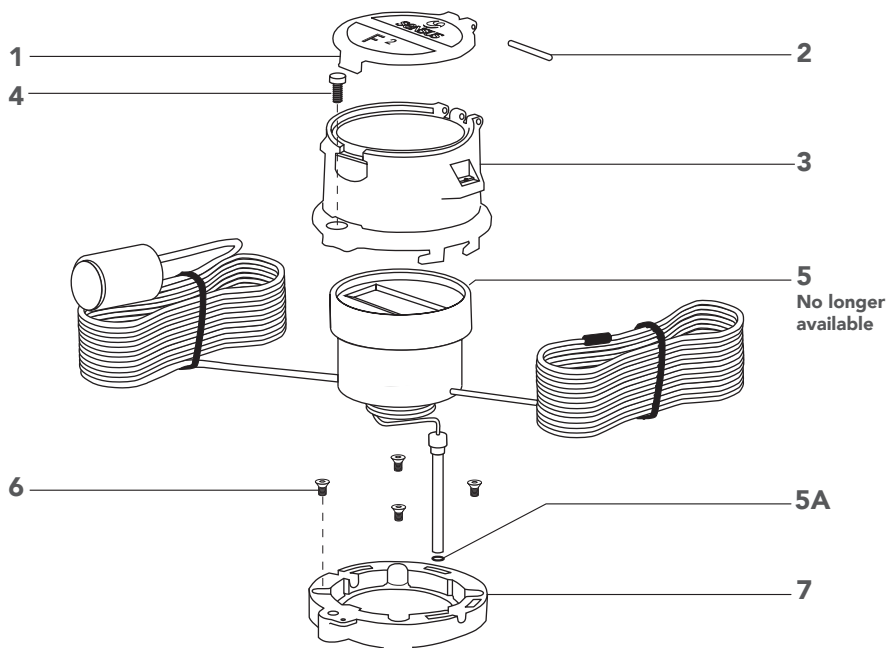
OMNI™+ ADVANCED REGISTER

Illustration #	Name of Part
2	Hinge pin
4	Bonnet seal screw
5A	Register pick-up probe O-ring
6	Locking ring screw
11B	Screw, spring hold down
11C	Spring
51	T ² OMNI+ bonnet lid
53	OMNI+ bonnet
55	OMNI+ register
57	OMNI+ locking ring
58	OMNI+ optical adapter
59	OMNI+ optical adapter screw



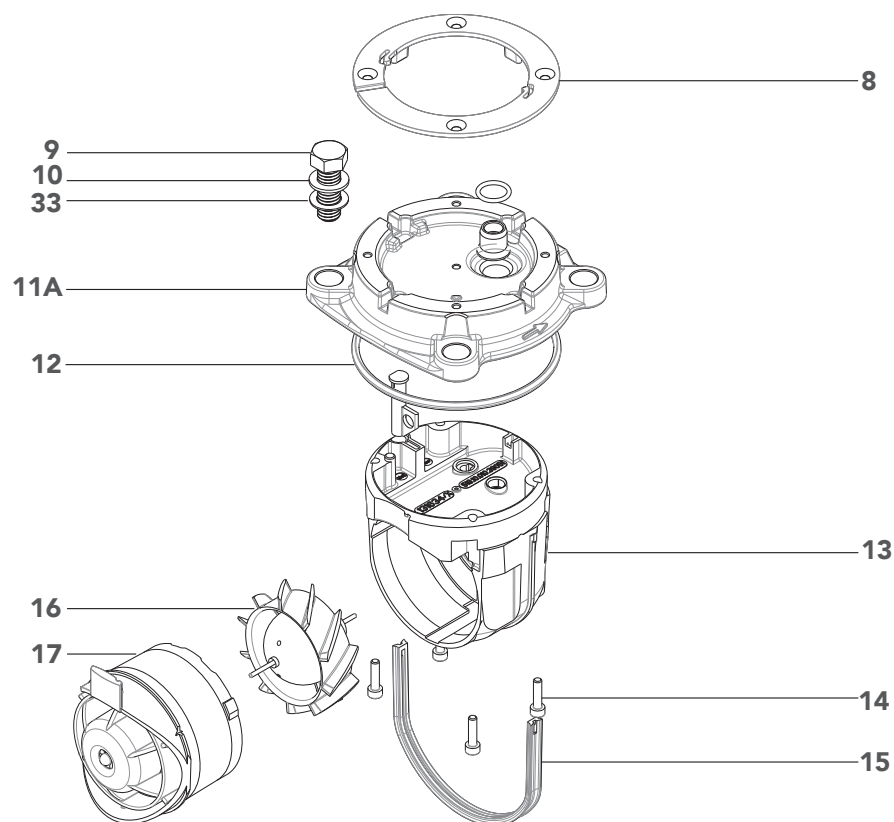
OMNI F²: 4", 6", 8" and 10"

Parts List



ORIGINAL OMNI REGISTER

Illustration #	Name of Part
1	F ² OMNI bonnet lid
2	Hinge pin
3	Bonnet
4	Bonnet seal screw
5A	Register pick-up probe O-ring
6	Locking ring screw
7	Locking ring

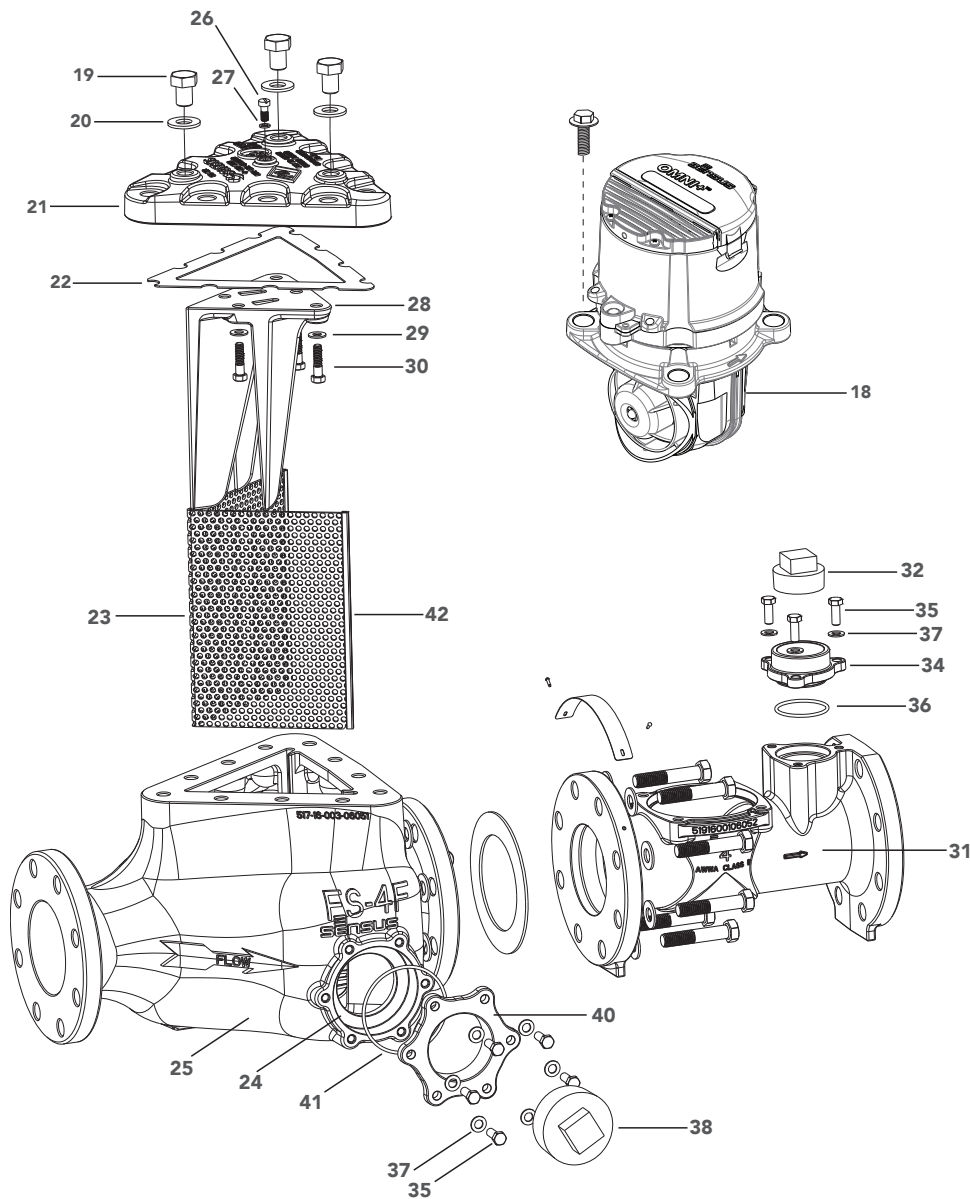


CHAMBER ASSEMBLY: ALL SIZES

Illustration #	Name of Part
8	Fixing ring
9	Chamber cover bolt
10	Bonnet seal screw
11A	Locking ring screw
12	Register pick-up probe O-ring
13	Measuring insert
14	Measuring insert screw
15	Chamber seal gasket (not required on 10")
16	F ² rotor
17	F ² balance plate
33	Chamber cover washer - black nylon

OMNI F²: 4", 6", 8" and 10"

Parts List



MEASURING CHAMBER AND STRAINER PARTS

Illustration #	Name of Part
18	Measuring chamber and register assembly
19	Strainer cover cap screw
20	Strainer cover bolt washer
21	Strainer cover
22	Strainer cover gasket
23	Strainer screen
24	Drain port
25	F ² strainer body
26	Vent screw
27	Vent washer
28	Strainer screen support
29	Washer
30	Screw
31	F ² maincase
32	Test plug
34	Test port adapter
35	Test port and drain port cap screws
36	Test port O-ring
37	Test port and drain port washer
38	Drain port plug
39	Drain port cap (not shown)
40	Drain port adapter
41	Drain port O-ring
42	Strainer screen edge guard

OMNI F²: 4", 6", 8" and 10"

Parts List

